



Capability Statement

Specialists in pavement rehabilitation and in-situ stabilisation

Efficient. Effective. Sustainable.

Who we are

Stabilcorp is an Australian-owned specialist contractor delivering pavement stabilisation, road rehabilitation and pavement improvement projects throughout New South Wales and Queensland.

Our team combines specialist plant, experienced personnel and proven methodologies to provide practical, high-quality and cost-effective pavement solutions for councils, government agencies, principal contractors and private industry. With a strong focus on efficiency, quality workmanship and reliable project delivery, we help clients maximise pavement performance while minimising disruption, time and whole-of-life costs.



✓
**SPECIALIST
CONTRACTOR**



✓
**DEDICATED
STABILISATION FLEET**



✓
**REGIONAL
DELIVERY CAPABILITY**



✓
**EXPERIENCED
PROJECT TEAMS**



✓
**PROVEN LOCAL
GOVERNMENT EXPERIENCE**

**In-Situ Stabilisation • Foam Bitumen Stabilisation • Heavy Patching
Pavement Rehabilitation • Pavement Reconstruction • Flood Damage Recovery**



Our Services

Pavement Stabilisation

Stabilisation improves the strength and performance of existing pavements by incorporating binders into the pavement structure recycling existing materials and creating a stronger, more durable and moisture-resistant pavement while reducing waste and imported materials.

Heavy Patching

Heavy patching provides targeted structural repairs to isolated pavement failures where full road rehabilitation is not required. This approach restores pavement integrity, improves safety and extends asset life while minimising disruption and cost.

Flood Recovery Works

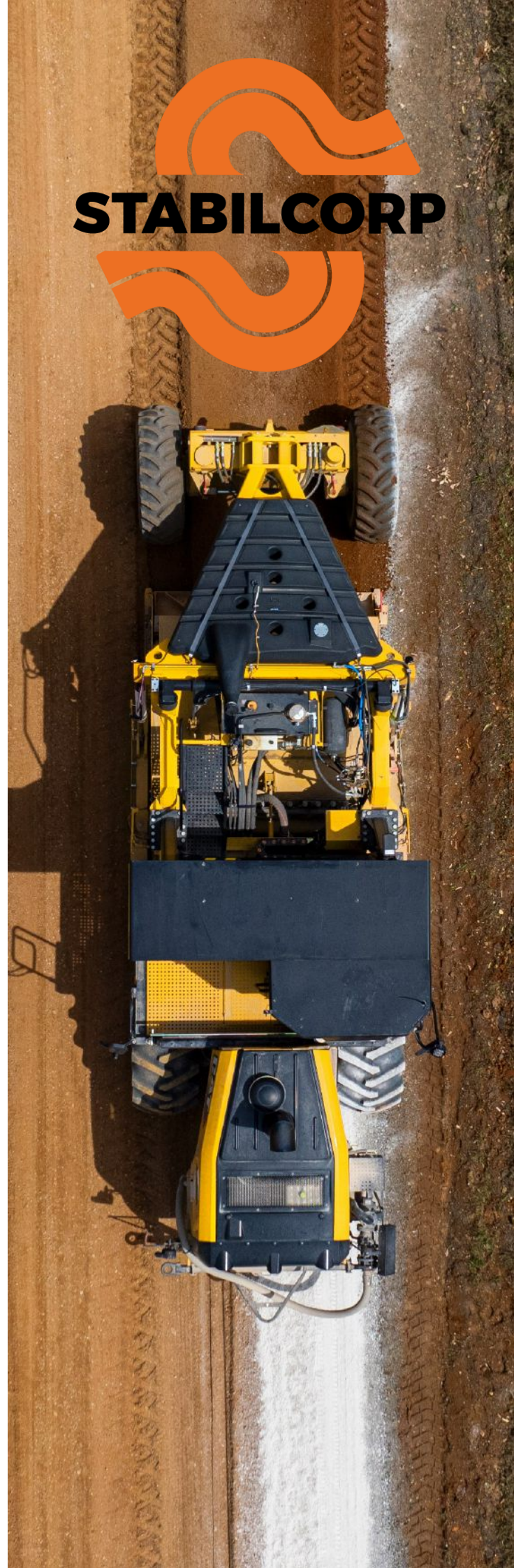
Rapid-response flood recovery services to restore damaged road infrastructure following extreme weather events. Our capabilities include pavement reconstruction, stabilisation, formation repairs, shoulder reconstruction and drainage restoration to return roads safely to service.

Shoulder Widening

Stabilcorp delivers road shoulder widening works to improve road safety, increase pavement width and enhance network performance. Works can include earthworks, pavement construction, stabilisation and sealing to seamlessly integrate with existing road infrastructure.

Foam Bitumen Stabilisation

Foam bitumen stabilisation combines recycled pavement materials with foamed bitumen to create a flexible, high-performance pavement layer. This method is particularly effective for heavily trafficked roads where improved fatigue resistance, flexibility and long-term pavement performance are required.



Why Stabilisation?

Many pavement failures result from deterioration of the underlying pavement structure rather than surface defects alone. Repeated pothole repairs often address the symptoms of pavement failure without resolving the root cause, resulting in ongoing maintenance costs and recurring defects. In-situ stabilisation rehabilitates the existing pavement by blending it with engineered binders, improving strength, durability and moisture resistance while extending pavement life and reducing long-term maintenance costs. By recycling existing materials in place, stabilisation also minimises waste, reduces the need for imported quarry materials and provides a sustainable, cost-effective rehabilitation solution.



✓ **REUSES EXISTING**
PAVEMENT MATERIALS



✓ **REDUCES IMPORTED**
QUARRY MATERIALS



✓ **EXTENDS**
PAVEMENT LIFE



✓ **IMPROVES**
MOISTURE RESISTANCE



✓ **REDUCES LONG-TERM**
MAINTENANCE COSTS



✓ **SUSTAINABLE**
REHABILITATION SOLUTION



From Repeated Repairs to Long-Term Rehabilitation

Stabilcorp recycles and strengthens existing pavements to deliver durable, cost effective road infrastructure solutions.



STRUCTURAL FAILURE



RECYCLE & STRENGTHEN



STRONGER & LONGER LASTING



Flood Damage Repairs

Stabilcorp was engaged by Quilpie Shire Council to deliver flood damage restoration works across the region's sealed road network following significant weather-related pavement deterioration. The project encompassed 101 individual pavement repair sites across 16 roads servicing the communities of Quilpie, Eromanga, Adavale, Cheepie and Toompine, covering an operational area spanning approximately 265 kilometres.

The works involved the rehabilitation of flood-damaged pavements through pavement preparation, overlay placement, in-situ stabilisation, compaction and sealing. Operating across multiple remote locations required careful planning, efficient logistics and coordinated resource management to ensure the program was delivered safely and efficiently.

Originally programmed as a seven-week construction project, Stabilcorp mobilised an additional stabilisation crew and successfully completed the rehabilitation works in just twelve working days, significantly reducing disruption to the local road network while restoring critical transport infrastructure for the region.

PROJECT SNAPSHOT	
	\$2.24M PROJECT VALUE
	66,894m² PAVEMENT REHABILITATED
	101 REPAIR SITES
	16 ROADS
	12 WORKING DAYS DELIVERY
	265km OPERATIONAL RADIUS



Road Rehabilitation

Stabilcorp was engaged by Clarence Valley Council to deliver a pavement rehabilitation program on sections of Summerland Way and the Gwydir Highway, restoring deteriorated pavement assets through heavy patching and in-situ stabilisation. The project formed part of Council's ongoing investment in improving the safety, durability and long-term performance of key transport corridors within the region.

The works involved the placement of DGB20 granular overlay, incorporation of stabilising binders, two-stage stabilisation, moisture conditioning, compaction and final trimming prior to the application of bituminous seals. Delivered in accordance with TfNSW M250 requirements, the program included comprehensive traffic management, quality assurance testing and coordination across multiple work sites to minimise disruption while maintaining project efficiency.

By combining specialist stabilisation equipment, experienced personnel and proven construction methodologies, Stabilcorp successfully rehabilitated more than 21,000 square metres of pavement, delivering a durable and cost-effective solution designed to extend pavement life and reduce future maintenance requirements.

PROJECT SNAPSHOT	
	\$1.28M PROJECT VALUE
	21,871m² PAVEMENT REHABILITATED
	199T STABILISING BINDER INCORPORATED
	1,959T DGB20 OVERLAY PLACED
	TfNSW M250 COMPLIANT DELIVERY
	MULTIPLE WORK SITES COMPLETED





Urban Stabilisation

Stabilcorp was engaged by Wagga Wagga City Council to deliver a multi-site pavement rehabilitation program across Holbrook Road, Kapooka Drive (Camp Access Road), Rabaul Place and Gregory Crescent. The project formed part of Council's ongoing commitment to improving the condition, safety and long-term performance of key arterial and residential road assets throughout the municipality.

The rehabilitation works involved pavement profiling, in-situ stabilisation using a 60/40 slag-lime blend, primer sealing, installation of asphalt reinforcement fabric and placement of a 50mm asphalt wearing course. Delivered under staged traffic management conditions and within active urban environments, the program required careful coordination across multiple sites to minimise disruption while maintaining construction efficiency and quality outcomes.

By combining specialist stabilisation expertise with comprehensive project management and quality assurance processes, Stabilcorp successfully delivered structural pavement renewal and upgraded surfacing treatments across the network, providing a durable and cost-effective solution designed to extend pavement life and improve road performance for the local community.

PROJECT SNAPSHOT



\$1.48M

PROJECT VALUE



MULTI-SITE

REHABILITATION PROGRAM



HATELIT C ECOLINE

ASPHALT REINFORCEMENT FABRIC



50mm AC14 PMB A15E

ASPHALT WEARING COURSE



URBAN & ARTERIAL ROADS

NETWORK REHABILITATION



Heavy Patching

Stabilcorp was engaged by Blayney Shire Council to deliver a heavy patching and pavement rehabilitation program across Belubula Way, Browns Creek Road and Forest Reefs Road. The project formed part of Council's ongoing investment in maintaining and improving the performance of key regional road assets through targeted pavement rehabilitation treatments.

Originally tendered at approximately 9,020 square metres, the project scope expanded during delivery to more than 11,000 square metres as additional pavement defects were identified and incorporated into the works program. Stabilcorp successfully accommodated the increased scope while maintaining the original construction timeframe, demonstrating flexibility, efficient resource management and strong collaboration with Council.

The rehabilitation works included pavement preparation, shoulder stripping, DGB20 overlay placement, spreader-applied binder incorporation, two-pass stabilisation, compaction, testing and application of a double/double 20/10 mm bituminous seal. Delivered in accordance with TfNSW M250 requirements, the project restored structural pavement integrity, improved road performance and provided a durable, cost-effective solution designed to extend pavement life and reduce future maintenance requirements.





Pavement Rehabilitation

Stabilcorp was engaged by Glen Innes Severn Council to deliver the Roads Rehabilitation Package 2025/26, a significant infrastructure program focused on improving the condition, safety and long-term performance of key regional road assets. The project encompassed rehabilitation works across Emmaville Road, Rangers Valley Road and Strathbogie Road, addressing both pavement deterioration and structural deficiencies through targeted rehabilitation treatments.

Delivered in accordance with Transport for NSW technical specifications, the program involved pavement excavation, shape correction, DGB20 overlay placement, in-situ stabilisation, installation of geofabric and rock mattresses, and application of two-coat bituminous seals. The works required careful planning and coordination across multiple sites to maintain efficient delivery while ensuring compliance with Council, TfNSW, WHS, environmental and quality requirements.

By combining specialist stabilisation expertise, dedicated plant and experienced project teams, Stabilcorp successfully rehabilitated more than 52,000 square metres of pavement, delivering durable and cost-effective improvements designed to extend pavement life, improve resilience and reduce future maintenance requirements across Council's road network.

PROJECT SNAPSHOT



\$2.11M
PROJECT VALUE



52,000m²+
PAVEMENT REHABILITATED



3,711m³
DGB20 SUPPLIED & PLACED



500T+
BINDER INCORPORATED



**GEOFABRIC &
ROCK MATTRESSES**
STRUCTURAL IMPROVEMENTS



Industry Accreditation & Prequalification

Stabilcorp maintains a range of industry accreditations and prequalification registrations that demonstrate our capability to deliver pavement rehabilitation and stabilisation projects in accordance with recognised industry standards and government requirements.

We are prequalified with both Transport for New South Wales (TfNSW) and the Queensland Department of Transport and Main Roads (TMR) to **R2/F25 Roadworks**, enabling us to undertake a broad range of road rehabilitation, pavement construction and maintenance activities for government and infrastructure clients.

Stabilcorp is also registered with TfNSW under **Category Z1 – Stabilisation (Insitu Method)**, recognising our specialist capability in the design and delivery of in-situ pavement stabilisation works. This registration reflects our experience, technical expertise and dedicated stabilisation fleet, allowing us to deliver complex pavement rehabilitation projects across regional and metropolitan road networks.

As an **AustStab Accredited Contractor**, Stabilcorp has demonstrated compliance with recognised industry best practice for the delivery of in-situ stabilisation using both powder and liquid binders. AustStab accreditation provides clients with confidence that stabilisation activities are undertaken using qualified personnel, appropriate methodologies and proven quality management processes.

These accreditations are supported by our integrated management system, certified to ISO 9001 (Quality Management), ISO 45001 (Work Health & Safety Management) and ISO 14001 (Environmental Management), ensuring projects are delivered safely, efficiently and in accordance with client and regulatory requirements.



AustStab
Accredited Contractor

In-Situ Stabilisation –
Powder & Liquid Binders



TfNSW
Category Z1

Stabilisation
(Insitu Method)



TfNSW & TMR
Prequalified

Level R2/F25
(Roadworks)



Triple ISO
Certified

ISO 9001 • ISO 45001
ISO 14001

ACCREDITED CONTRACTOR

2026



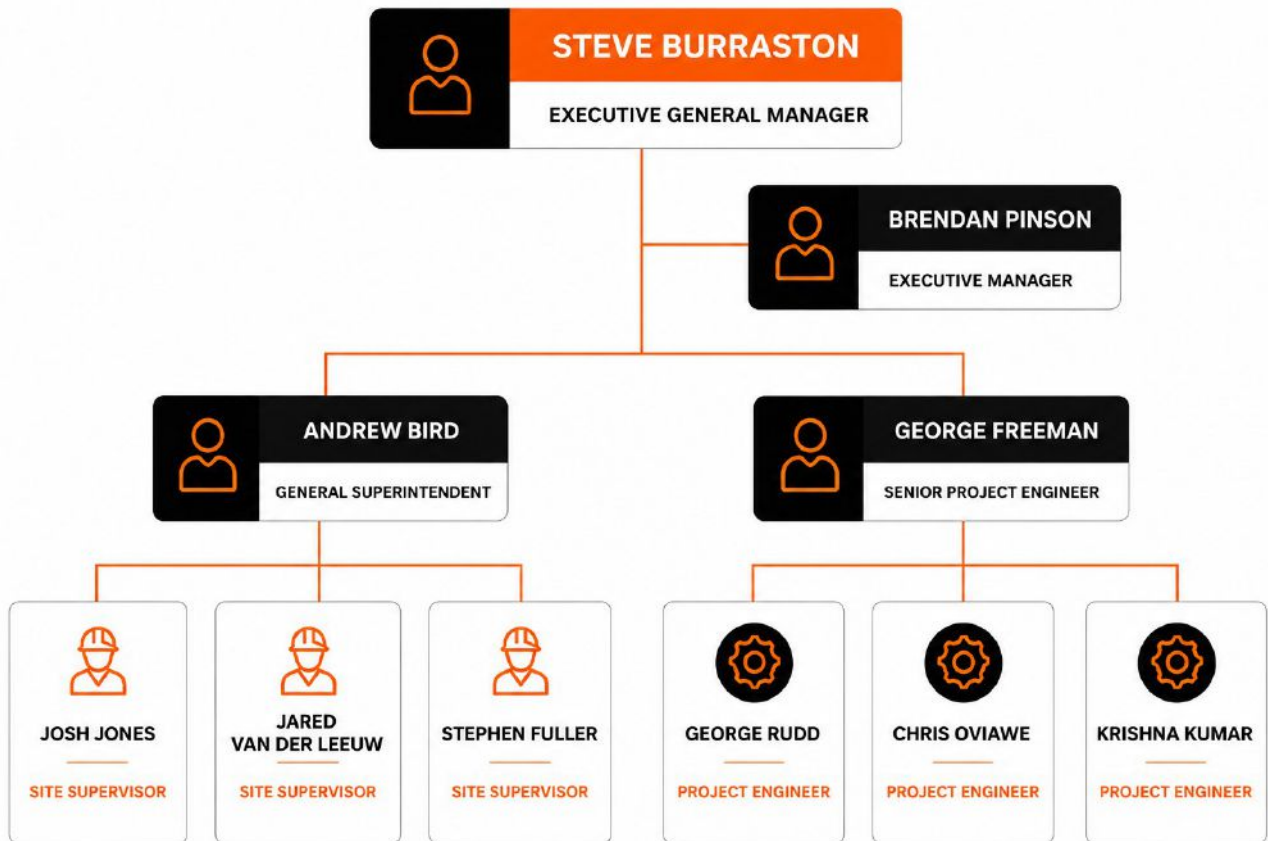
2026

ACCREDITED CONTRACTOR



Key Personnel

Stabilcorp's project delivery structure combines experienced operational leadership with dedicated engineering, supervisory and support personnel to ensure safe, efficient and compliant project delivery. Our management team is supported by qualified project engineers, site supervisors and specialist operators who work collaboratively to manage planning, quality assurance, safety, environmental compliance and programme delivery across all projects. This integrated approach provides clients with clear communication, strong technical oversight and consistent project outcomes from commencement through to completion.





Dedicated Plant & Equipment Fleet

Stabilcorp maintains a modern, purpose-built fleet of plant and equipment specifically configured for pavement stabilisation, rehabilitation, road construction and flood recovery works. Our integrated fleet, transport and workshop capabilities allow us to mobilise efficiently, maintain programme certainty and deliver projects safely and reliably throughout New South Wales and Queensland.



Integrated fleet, transport and workshop capabilities delivering efficient project mobilisation and reliable outcomes across NSW and Queensland.



Dedicated
Fleet



In-House
Transport



Workshop
Support



NSW & QLD
Deployment

Project Management

Stabilcorp adopts a proactive and collaborative approach to project delivery, supported by experienced personnel, clear communication pathways and robust management systems. Dedicated project managers work closely with clients and stakeholders, ensuring programme objectives, quality requirements and safety obligations are consistently achieved. Regular reporting, quality assurance processes and stakeholder engagement activities provide transparency and confidence throughout the project.



Stabilcorp is committed to delivering sustainable infrastructure outcomes through the use of in-situ stabilisation techniques that maximise the value of existing pavement assets. By reusing pavement materials already present on site, stabilisation reduces waste, minimises reliance on imported quarry products and decreases transport-related environmental impacts. Combined with improved pavement performance and extended service life, this approach provides a sustainable and cost-effective rehabilitation solution that supports the long-term management of road infrastructure.



MAXIMISE
RESOURCE REUSE



REDUCE
HAULAGE



LOWER
EMISSIONS



EXTEND
PAVEMENT LIFE



BETTER FOR
COMMUNITIES

Local Commitment

Stabilcorp is a proudly Australian-owned and operated business with operational hubs in Wauchope, Orange and Coomera, supporting road rehabilitation and construction projects throughout New South Wales and Queensland. As a regional contractor, we recognise the importance of investing in the communities in which we work.

Wherever practical, Stabilcorp prioritises the use of local accommodation providers, suppliers, subcontractors and service businesses, ensuring project expenditure contributes directly to regional economies. Our teams actively support local hospitality venues, retailers and community businesses throughout project delivery, while our procurement practices seek to maximise opportunities for local participation and employment.

This commitment not only strengthens local economies but also enhances project efficiency through the use of regional knowledge, established supplier networks and responsive local support services.



Our Locations





**37 Commerce Street
Wauchope NSW 2446**



02 6585 2519



www.stabilcorp.com.au